

## DL2 and DL21 Speed Log System

### Reset of Total Trip Counter

This document is to be used as a guideline to reset/set the system Total Trip Counter in cases where a DL2/DL21 Speed Log System Total Trip counter has passed 99 999.9

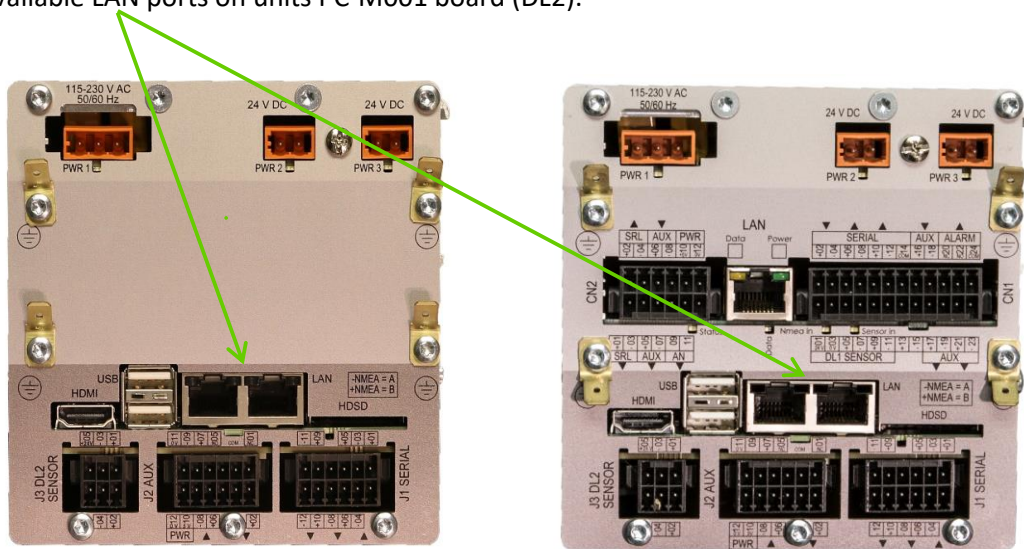
When this happen repeaters e.g. IR300 will show -.-.-.-.- in their display, reason is limitation of digits in the repeaters and not a limitation to the DL2/DL21 system itself.

The work around is to carry out a Reset of the Trip counter. To do so you will need latest [Skipper Service Software](#) (LINK) which is located on our WEB page under Software.

This procedure requires an ethernet cable between a computer with the latest version of Skipper Service Software running and the JB70D2/21-SA Electronic Unit.

#### Procedure:

- 1) Locate the JB70D2/21 Electronic Unit and connect the ethernet cable to one of the two available LAN ports on units PC-M001 board (DL2).



- 2) Configure your computer LAN port to be on same IP Subnet as the DL2 system default is 172.16.1.x – e.g. 172.17.1.50

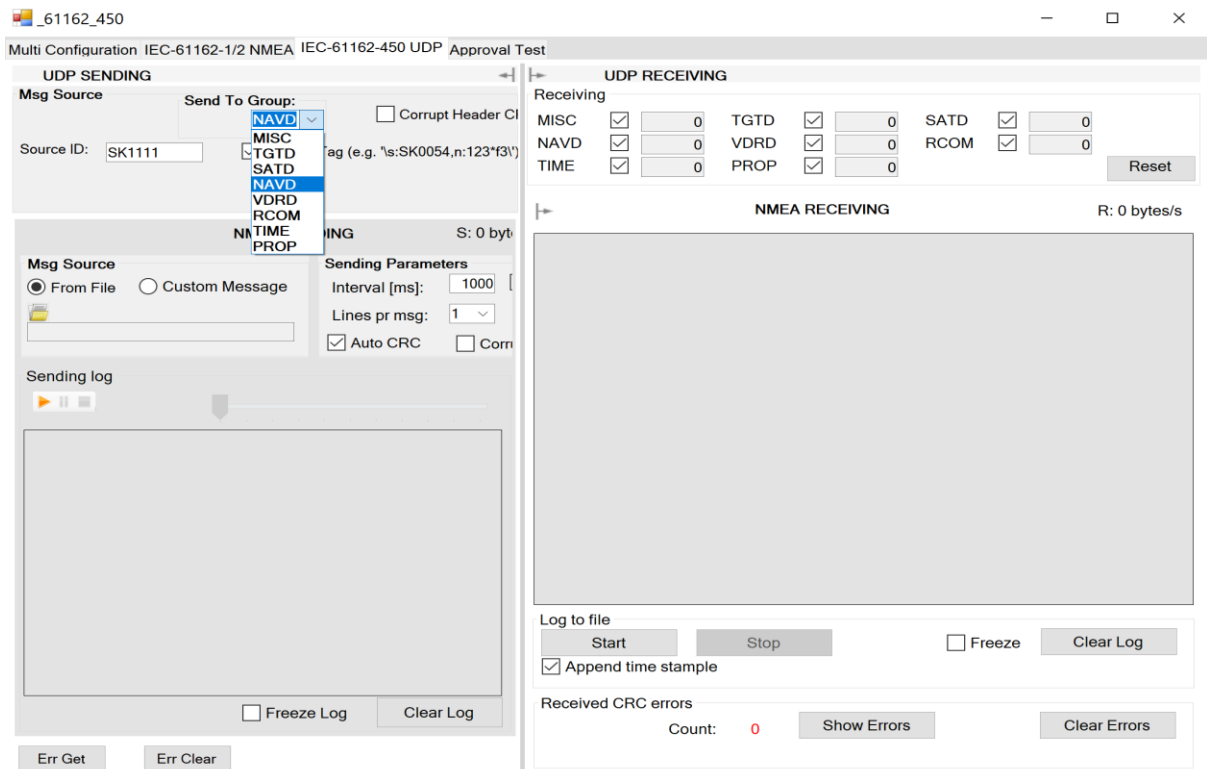
- 3) Start the Skipper Service Software and select **Tools > Com Setup**. Make sure the network

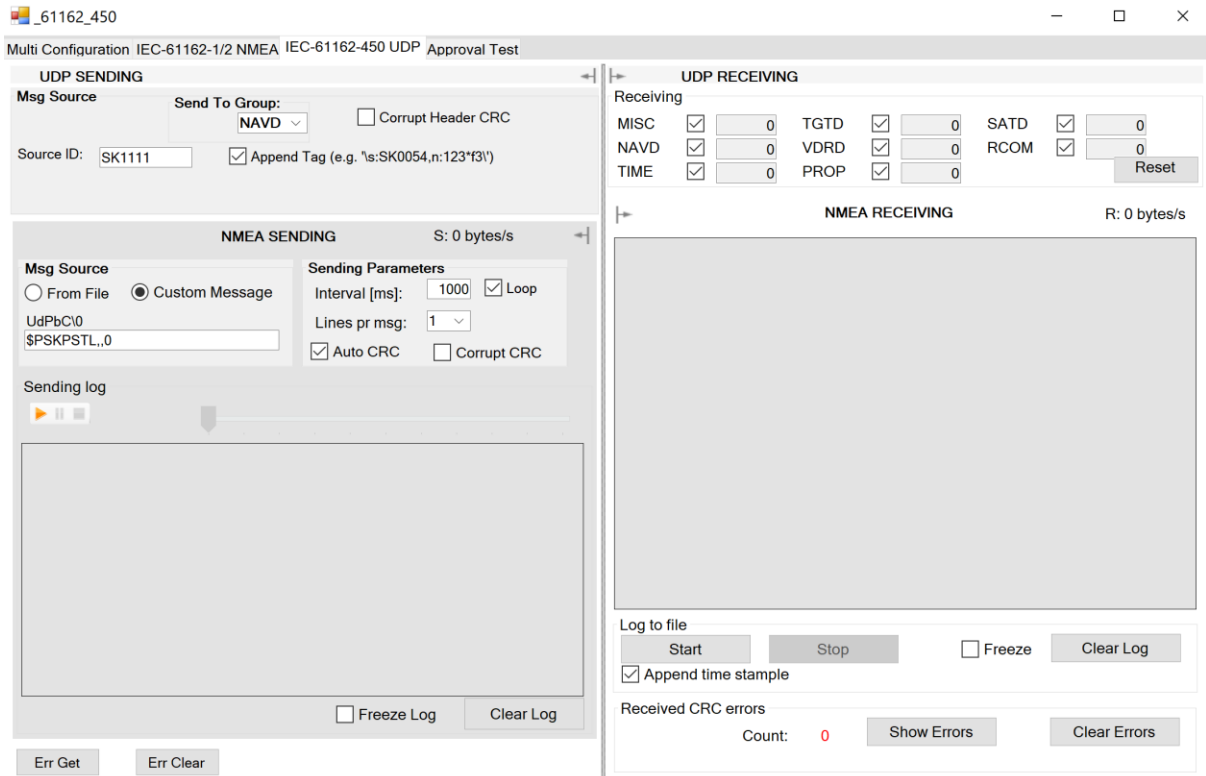
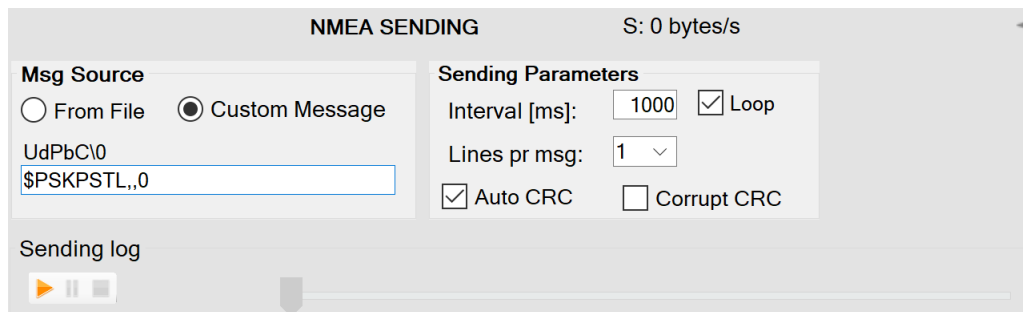


selector is set to correct port.




- 4) Select the **IEC-61162-450 UDP** Tab, make sure you change the **Send To Group** to **NAVD**



5) Select **Msg Source** - Custom Message

6) Copy and paste below line into the **UdPbC\0** window.


## 7) NMEA string to reset/set total trip counter: \$PSKPSTL,,0

8) Next press the **PLAY**  button to send the NMEA sentence.

This completes the procedure on how to reset/set Total Trip counter.

Please contact [support@skipper.no](mailto:support@skipper.no) in case you have questions or concerns.